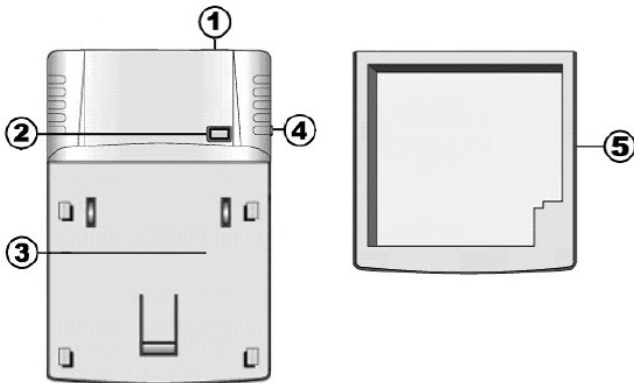


Traveler Flex Battery Charger

Congratulations on your purchase of this ProMaster Traveler Flex Battery Charger. Please read these instructions thoroughly before using the charger to ensure proper and safe operation. With proper use, your Traveler Flex Battery Charger will provide many years of excellent service.

PARTS DIAGRAM



1. Power Input (DC IN) Socket

For connecting with the barrel plug end of the AC power adapter included in this kit

2. LED Charge Indicator

Red LED = battery charging in progress

Green LED = power on / battery fully charged

3. Charger Base Unit

4. Booster Switch

For boosting a 7.2V/7.4V Li-Ion battery with lower or zero voltage

5. Battery Mounting Plate

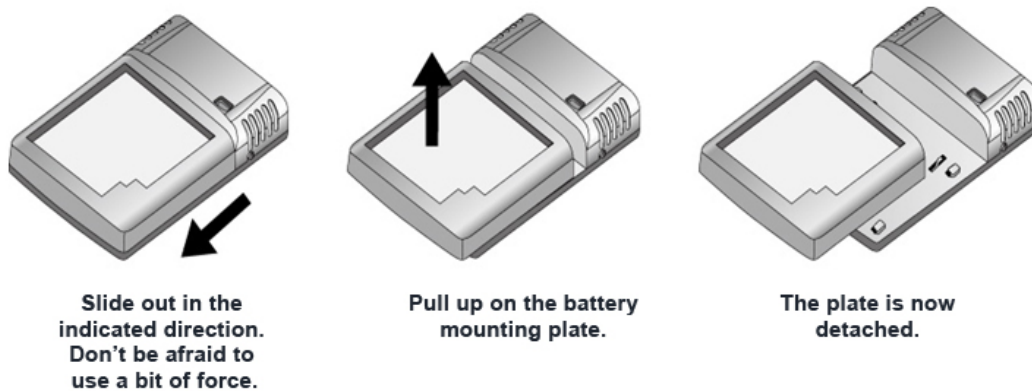
OPERATION

1. Connect the AC power adapter's barrel plug end into the DC IN Socket (1) of the Traveler Flex Charger Base Unit (3) and then plug the AC prongs into a standard AC outlet. The LED Charge Indicator (2) will turn green to indicate that the charger is properly powered and ready for use. (The LED will remain green until a battery is inserted. It will turn red while the battery is being charged, and become green again once charging is complete.)
2. The Traveler Flex charger has a multi-mount design and is compatible with many batteries. Please refer to your charger's Compatibility Illustration in this manual's Appendices to find the appropriate contacts on the charger for your battery. To switch Battery Mounting Plates (5), follow the instructions in part 3 of this section of the manual.

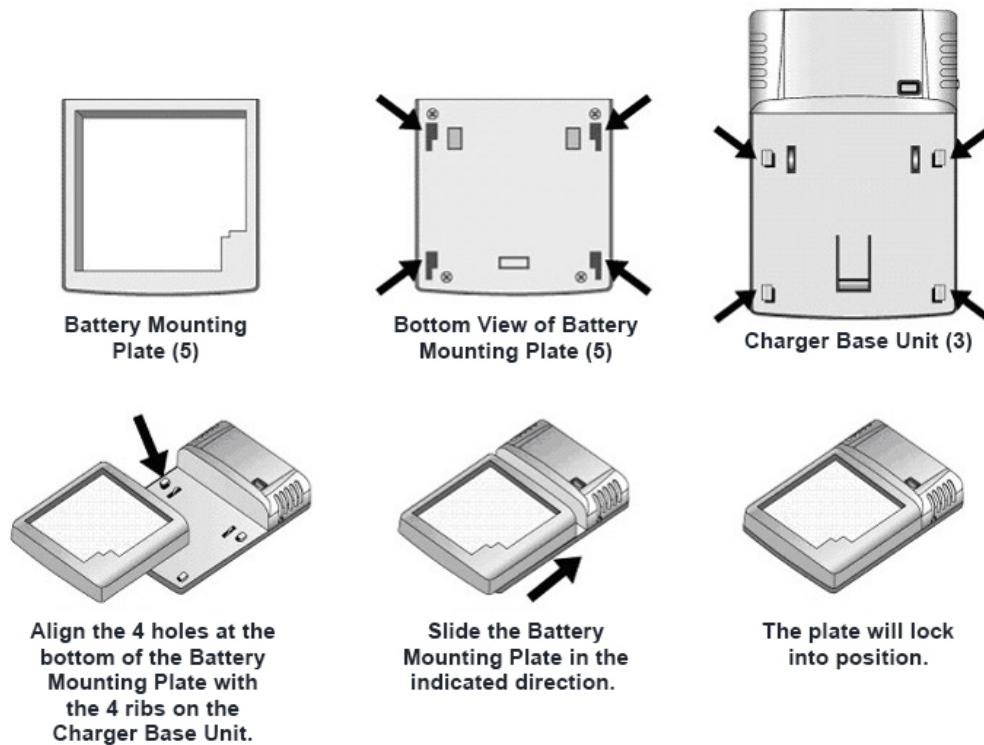
3. This Traveler Flex's Charger Base Unit (3) accepts interchangeable Battery Mounting Plates (5); some Traveler Flex kits come with additional Battery Mounting Plates included. To switch plates, follow the procedure demonstrated in Figure A.

FIGURE A

Removing a Battery Mounting Plate



Installing a Battery Mounting Plate



4. Mount the lithium-ion battery that you wish to charge onto the Traveler Flex Charger according to the diagram provided on the Traveler Flex Compatibility Illustration. Make sure the battery is installed correctly by matching the contact pins and polarity symbols (+ / -) embossed on the charger's battery

mounting plate. The LED Charge Indicator (2) will turn red to indicate that the battery has been mounted correctly and charging has begun.

5. Due to the protection circuitry built into Li-ion batteries, some depleted batteries with low or zero voltage, including those that have not been used for an extended period, may not be detected by the charger when inserted. When this occurs, the LED Charge Indicator (2) will not turn red to indicate that charging has begun. To reactivate a battery in this condition and charge it properly, use the charger's boost function by pressing and holding the Booster Switch (4) for at least three seconds. The LED Charge Indicator (2) will turn red after a successful boost to indicate that charging has started.
Note: Ensure that the battery is mounted properly before using the Booster Switch (4). The boost procedure should only be used with 7.2V/7.4V Li-ion batteries and is not necessary for charging a 3.6V/3.7V Li-ion battery.
6. When a battery is charged to approximately 90% of its rated capacity, the LED Charge Indicator (2) on the Traveler Flex will turn green. The charger is now in "trickle charge" mode. Once the LED has turned green, you may remove your battery from the charger and use it immediately. To charge a battery to 100% of its capacity, leave it charging for approximately 30 additional minutes after the LED turns green.
7. It is safe to leave your battery on the charger after it is fully charged. However, to avoid unnecessary power consumption and prolong the operating life of the charger, we do not recommend leaving the battery in the charger for extended periods of time.
8. The Traveler Flex has multi-voltage circuitry. Because it accepts 100-240V, it can be used in most places around the globe without a voltage converter. Only use the included AC adapter when powering the Traveler Flex. An outlet adapter (used in conjunction with the included AC adapter) is needed for countries that do not use Type A and Type B plugs.

Tips for Use

1. All batteries will slowly and naturally discharge even when they are not in use. To prolong their service life, it is recommended that you do not let a battery sit idle for more than two months without recharging.
2. Remove batteries from your camera after use. Cameras will continue to drain a small amount of current from installed batteries even when turned off.
3. Keep the metal contacts on your batteries and the charger clean by wiping them with a clean and dry soft cloth.
4. It is normal for batteries and the charger to get warm during the charging cycle.
5. Always verify that your battery has been inserted into the charger with the correct polarities.

Precautions

1. The Traveler Flex Charger is made for use with rechargeable Li-ion batteries ONLY. Inserting any other type of battery may damage the device, destroy the battery, and cause serious injury.
2. Disconnect the charger from power before changing the Battery Mounting Plate.

3. Disconnect the charger from power when not in use.
4. Disconnect the charger from power before cleaning.
5. Use the Booster Button with 7.2V/7.4V Li-ion batteries only. Do not attempt the boost procedure with other batteries.
6. Use this device exclusively with the included AC power adapter. Do not use if the power adapter's wires are frayed or damaged or if the plugs are damaged.
7. Never connect the Traveler Flex to an outlet or power source with voltage above 240 Volts or below 100 Volts.
8. Do not touch with wet hands and keep the charger away from moisture and liquids. Do not allow it to get wet or submerge it.
9. Avoid contact with solvents, gasoline, grease, oil, paint, and detergents.
10. Do not operate near flammable liquids.
11. Do not disassemble, open the housing, or attempt to repair yourself.

Troubleshooting

The red (charge) LED indicator does not illuminate when the charger is connected to a power source and a battery has been inserted.

- The battery may not have been properly inserted. Unplug the charger from the power source and make sure that the battery is seated properly. Double-check to ensure that the polarities match before plugging the charger in again.
- Make sure the barrel plug of the AC adapter is properly and fully connected to the charger's Power Input (DC IN) Socket (1).
- Make sure that the metal contacts on both the battery and charger are clean. If not, wipe the contacts with a soft, dry cloth.

The battery reaches a full charge very rapidly.

- The battery may not have been fully depleted before charging.
- The battery is reaching the end of its service life and should be replaced.

The battery is providing a reduced operating time after being fully charged.

- The battery may have sat idle without being charged for too long.
- The battery is about to reach the end of its service life. All rechargeable batteries will eventually wear out after being used for a certain number of cycles.

Specifications

Input Power: 100~240V AC, 50/60Hz (AC input)
12~24VDC, Min. 6W (DC input)

Output Power: 4.2V/8.4V DC, Max. 750mA (with auto detection)

Dimensions: 4 1/16" x 2 3/4" x 1 1/16" / 103 mm x 70 mm x 27 mm

Charger Weight: 2.5 oz / 70.2 g (base unit without battery mounting plate – mounting plates weigh between 0.9 oz – 1.05 oz / 26 g – 30g)

AC Adapter Weight: 3.5 oz / 99.5 g

One Year Unconditional Warranty

If for any reason, this ProMaster product fails within ONE YEAR of the date of purchase, return this product to your ProMaster dealer and it will be exchanged for you at no charge. ProMaster products are guaranteed for ONE FULL YEAR against defects in workmanship and materials. If, at any time after one year, your ProMaster product fails under normal use, we invite you to return it to ProMaster for evaluation.

CODES: 70120, 70127, 70134, 70141

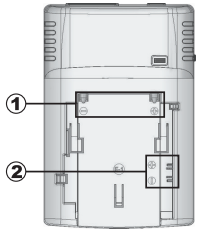
Made in Taiwan

WWW.PROMASTER.COM

APPENDIX 4: 70141 Traveler Flex Charger – Sony Compatibility Illustration

[pro]master® TRAVELER FLEX

Compatibility Illustration (Plate E)



FITS MOST

SONY

CAMERA BATTERIES

Code 70141

①



SONY
InfoLithium L Series
NP-F330 / F530 / F550 / F570
NP-F730 / F750
NP-F930 / F950 / F960 / F970

InfoLithium M Series
NP-FM30 / FM50 / FM51 / FM51D
NP-FM55H / FM500H
NP-FM70 / FM71
NP-FM90 / FM91
NP-SQM50 / SQM51
NP-SQM70 / SQM71 / SQM71D
NP-SQM90 / SQM91 / SQM91D

Match the + & - symbols

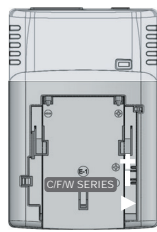


STEP 1 : Check the + & - symbols in the charger slot.

STEP 2 : Check the + & - symbols on the battery.

STEP 3 : Be sure to match the + & - symbols when inserting the battery into the charger for recharging.

②



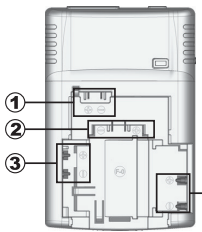
SONY
InfoLithium C Series
NP-FC10 / FC11

InfoLithium F Series
NP-FF50 / FF70 / FF71
NP-FF90 / FF91

InfoLithium W Series
NP-FW50

[pro]master® TRAVELER FLEX

Compatibility Illustration (Plate F)



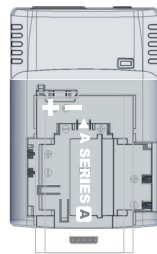
FITS MOST

SONY

CAMERA BATTERIES

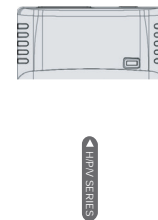
Code 70141

①



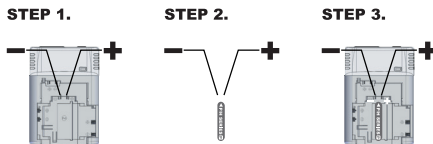
Sony
InfoLithium A Series
NP-FA50 / FA70

②



Sony
InfoLithium H/P/V Series
NP-FH50 / FH70 / FH90 / FH100
NP-FP50 / FP50D / FP51
NP-FP70 / FP70D / FP71
NP-FP90 / FP90D / FP91
NP-FV50 / FV70 / FV100

Match the + & - symbols

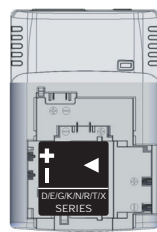


STEP 1 : Check the + & - symbols in the charger slot.

STEP 2 : Check the + & - symbols on the battery.

STEP 3 : Be sure to match the + & - symbols when inserting the battery into the charger for recharging.

③



Sony
InfoLithium D/E/G/K/N/R/T/X Series
NP-BD1
NP-FD1
NP-FE1
NP-BG1
NP-FG1
NP-BK1
NP-BN1
NP-FR1
NP-FT1
NP-BX1

④



Sony
InfoLithium S Series
NP-F10 / F20 / F30
NP-FS10 / FS11 / FS12
NP-FS20 / FS21 / FS22
NP-FS30 / FS31 / FS32